

# vembu

---

Backup & Disaster Recovery

# vembu

Backup & Disaster Recovery



10+ Years



100+ Countries



60,000+ Businesses

# Vembu Technology Partner



# Vembu BDR Suite

*Vembu BDR Suite is a portfolio of products designed to backup multiple environments from virtual to physical to cloud while addressing diverse and advanced use cases*



**Backup & Replication for  
VMware**



**Backup & Replication for  
Hyper-V**



**Backup for  
Microsoft Windows**



**Backup for AWS**



**Backup for  
Microsoft 365**



**Backup for  
Google Workspace**



**Backup for  
File Servers**



**Backup for  
Endpoints**



**Backup for  
Applications**

# Vembu

## Product Overview

# Backup & Replication for **Virtual Environment**



## Backup & Replication for **VMware**

*Vembu Backup & Replication for VMware delivers a powerful, flexible, and fully-featured backup solution that helps organizations to effectively meet the backup demands of their VMware vSphere environment.*

- Agentless Image-level VM Backup
- Near Continuous Data Protection
- Direct SAN and Hot-Add transport modes for backup
- VMware Changed Block Tracking for incremental backups
- VMware Replication for complete Site-level protection



## Backup & Replication for **Hyper-V**

*Vembu Backup & Replication for Hyper-V is an effective solution for data protection gaps that businesses experience every day while protecting their virtual machines running on their Hyper-V environments.*

- Image backup for Hyper-V VMs at Host and Cluster level
  - Resilient Change Tracking (RCT) based incremental backups
  - Supports Hyper-V Cluster, CSV, S2D and SMB share
  - Application-aware backups with Log Truncation
  - Failover & undo Failover the replicated Hyper-V VMs
-

# Image Backup for **Microsoft Windows**



## **Backup for Microsoft Windows**

*Vembu Backup for Microsoft Windows allows you to backup the entire disk or a selected partition of Windows systems including its Operating System(OS), boot information, system settings, applications, and files – even while the system is still being used.*

- Disk-Image based backup for Windows Machines
  - Supports backup for disks having more than 2 TB of data
  - Backup both Basic and Dynamic disks in a Windows machine
  - Supports Bare-metal Recovery (BMR)
  - Backup disks of MBR, EBR, LDM, and GPT partitions
-

# Backup for **Cloud Workloads**



## **Backup for AWS**

*Vembu Backup for AWS offers a simple, secure and cloud-native AWS backup software for the AWS EC2 instances. You can recover the backup instance, volume or even files at any time with near-zero RTO.*

- Agentless Cloud-Native Backup for EC2 instances
  - Near-Continuous Data Protection with Auto Scheduling
  - Application-Aware Backups
  - Instance and Volume-level Recovery
  - Exhaustive Backup and Recovery Reports
-



# Backup for SaaS Applications



## Backup for Microsoft 365

*Vembu Backup for Microsoft 365 is an robust solution that protects emails, contacts, calendar, and one drive of Microsoft 365 by directly backing up locally.*

- Backup Entire Domain or Specific User Data
- Recover Entire Mailbox or Individual Mails
- Export to multiple formats like .PST, .EML, .VCF, .ICF, etc...
- Restore OneDrive Business Folders with Folder Structure
- Backup Sharepoint & Teams and restore them Granularly



## Backup for Google Workspace

*Vembu Backup for Google Workspace is an effective solution that ensures protection of emails, contacts, calendar, and google drives by directly backing up to the on prem server.*

- Backup your entire Domain or select users manually
  - Store Google Workspace backup data in your local data center
  - Set a schedule for the backups and run automatically
  - Search and view the emails of the backed-up user accounts
  - Detailed and reliable backup and recovery reports
-

# File & Application Backup for **Windows, Linux & Mac**



## **Backup for File Servers**

*Vembu Backup for File Servers helps to protect your data across file servers of Windows, Linux with enterprise-level functionality.*

- Continuous Data Protection
- Flexible Retention policies
- Interruption-free Backup



## **Backup for Endpoints**

*Vembu Backup for Endpoints ensures protection to critical data across your Windows, Mac platforms at granular level.*

- High Compression Ratio
- Client/Server Side Restore
- Pre/Post Commands



## **Backup for Applications**

*Vembu Backup for Applications enhances the data protection of your application servers, by backing up the application items granularly.*

- MS Exchange, SQL, SharePoint, Outlook and MySQL
- Highly secured Encryption and Compression
- Granular Application Recovery

# Vembu Offsite/DR Copy

*Replicate a secondary copy of your data to an offsite location for disaster recovery purposes, In case of primary site failure, you can restore your data from the offsite storage with minimal downtime.*



## Vembu Offsite DR

*Devise a reliable DR plan for your business by replicating a copy of the backup data from your on-premise data center to an offsite server.*

- WAN-optimized Live Data Transfer
- Restore directly from the offsite server
- Throttle the speed of the data transfer
- Seamless Live Data Transfer
- Seed the Huge Full Backup data to Offsite DR Server

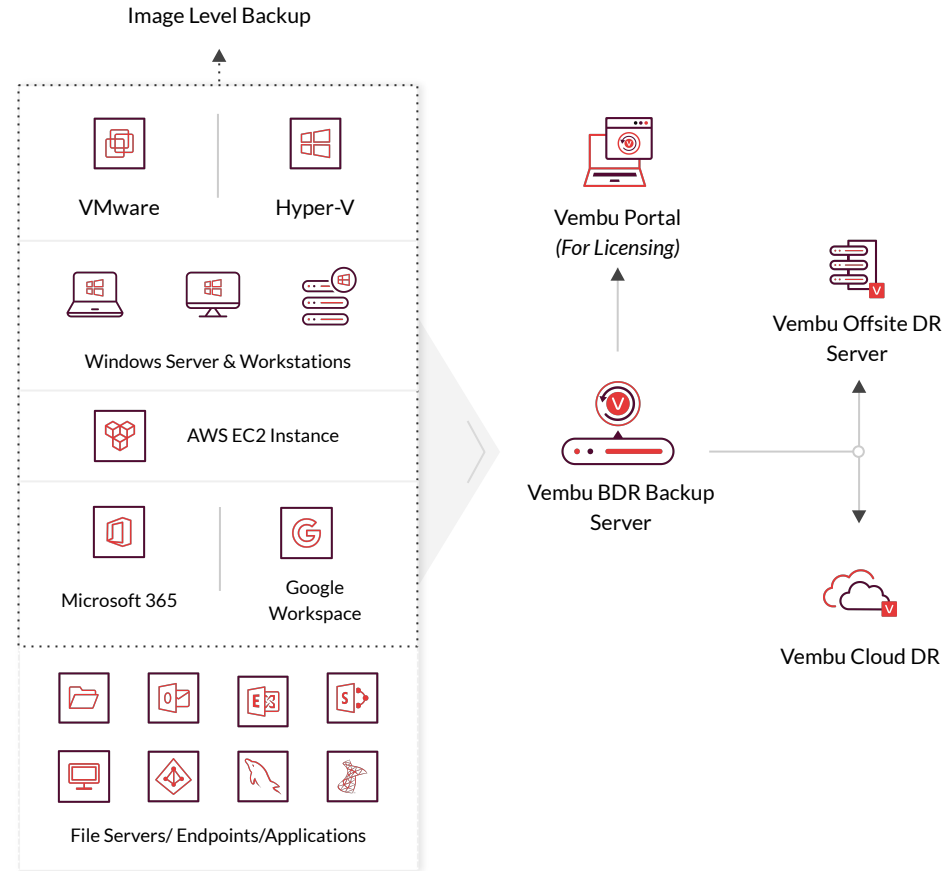


## Vembu Cloud DR

*Reinforce your Disaster Recovery plan by replicating the copy of backup data from your on-premise data center to Vembu Cloud.*

- Backup data encryption both in-flight and at-rest
- Restore the replicated data anywhere and anytime
- WAN accelerated data transfer
- Download the backup data in VHD, VMDK file formats
- Recover the replicated data granularly

# Vembu BDR Architecture



# Vembu BDR Suite

Key features

# Key Backup & Replication Features of Vembu BDR Suite



## Multi-host Backup

Create a backup job with multiple-hosts and configure to run parallel thus improving backup performance.



## Parallel VM Processing

Vembu now supports parallel backup of multiple VMs/disks in a single host



## Sharepoint & Teams Backup

Now backup Microsoft 365 applications i.e, Sharepoint and Teams; and restore them granularly.



## Synthetic Full Backup

Synthetic full backups are created in the backup repository by merging the full backup and all subsequent incremental backups in the backup repository itself



## Native Tape Backup Support

Archive your backup data on tape drives for long-term retention.



## Backup Job Template

The frequently used backup configuration settings or as per some predefined backup policies, you can utilize these templates to create new backup jobs quickly.

# Key Recovery Features of Vembu BDR Suite



## RPO and RTO < 15 mins

Minimize your downtime to less than 15 mins with quick VM recovery, disk mounts & granularly recover file/apps.



## GFS Retention

GFS retention helps to create restore points on a weekly, monthly, quarterly, and yearly basis.



## Multiple Recovery Options

Multiple restore options helps to restore the backup data granularly, perform cross-platform migration, instantly boot as VM, Download in various file-formats and also perform Bare-Metal Recovery



## Instant Boot Live Migration

A permanent migration process where the virtual/ physical machine backup that is instantly booted as VM can be migrated as an independent VM to a targeted VMware Host.



## Applications item-level Recovery

Granularly restore Microsoft applications at item level directly from the BDR Backup Server web GUI



## Reliable Backups

Automated 3-tier backup verification - boot, mount & data integrity tests to ensure recoverability data.

# Other Key Features of Vembu BDR Suite



## Efficient Storage Management

Vembu BDR Backup Server utilizes VembuHIVE™ file system to effectively manage storage repositories..



## Compression

Built-in compression and deduplication to reduce the storage space with the ability to scale as & when required.



## Backup Level encryption

Use system-generated passwords or add your own, to encrypt the backup data using AES-256 bit encryption algorithm.



## Drive Rotation

It helps you to use multiple external hard drives to store the backup data and swap them on a regular basis.



## Where it left off

Even if there is a network failure or other interruptions during backup, the backup will automatically restart from where it left off during the previous schedule



## Reporting

Users can manage all their backups with Backup Status Reports, VM Status Reports, Integrity Report and Restore Report





**Vembu** Licensing

## Backup & Replication for VMware/Hyper-V

	<b>Standard Essentials</b> <i>Upto 10 sockets or 100 VMsv</i>	<b>Standard</b>	<b>Enterprise Essentials</b> <i>Upto 10 sockets or 100 VMs</i>	<b>Enterprise</b>
<b>Subscription License:</b> <i>Includes product updates, upgrades and standard technical support during the subscription period</i>				
<b>CPU Socket level pricing</b>	<b>\$108</b> <i>per cpu-socket/annum</i>	<b>\$216</b> <i>per cpu-socket/annum</i>	<b>\$180</b> <i>per cpu-socket/annum</i>	<b>\$360</b> <i>per cpu-socket/annum</i>
<b>VM level pricing</b>	<b>\$18</b> <i>per vm/annum</i>	<b>\$36</b> <i>per vm/annum</i>	<b>\$30</b> <i>per vm/annum</i>	<b>\$60</b> <i>per vm/annum</i>
<b>Perpetual License:</b> <i>Free maintenance &amp; support for 1st year</i>				
<b>CPU Socket level pricing</b>	<b>\$270</b> <i>per cpu-socket</i>	<b>\$540</b> <i>per cpu-socket</i>	<b>\$450</b> <i>per cpu-socket</i>	<b>\$900</b> <i>per cpu-socket</i>
<b>VM level pricing</b>	<b>\$45</b> <i>per vm</i>	<b>\$90</b> <i>per vm</i>	<b>\$75</b> <i>per vm</i>	<b>\$150</b> <i>per vm</i>

# Backup for Microsoft Windows

	Workstation	Server
<b>Subscription License</b> <i>(Includes product updates, upgrades &amp; standard technical support until subscription period)</i>	<b>\$15</b> <i>per workstation/annum</i>	<b>\$60</b> <i>per server/annum</i>
<b>Perpetual License</b> <i>(Free maintenance &amp; support for 1st year)</i>	<b>\$37.50</b> <i>per workstation</i>	<b>\$150</b> <i>per server</i>

# Backup for AWS

	<b>EC2 Instance</b>
<b>Subscription License</b> <i>(Includes product updates, upgrades &amp; standard technical support until subscription period)</i>	<b>\$30</b> <i>per Instance/annum</i>
<b>Perpetual License</b> <i>(Free maintenance &amp; support for 1st year)</i>	<b>\$75</b> <i>per Instance</i>

# Backup for Microsoft 365

	Microsoft 365
<b>Subscription License</b> <i>(Includes product updates, upgrades &amp; standard technical support until subscription period)</i>	<b>\$12</b> <i>per user/annum</i>
<b>Perpetual License</b> <i>(Free maintenance &amp; support for 1st year)</i>	<b>\$30</b> <i>per user</i>

# Backup for Google Workspace

	Google Workspace
<b>Subscription License</b> <i>(Includes product updates, upgrades &amp; standard technical support until subscription period)</i>	<b>\$12</b> <i>per user/annum</i>
<b>Perpetual License</b> <i>(Free maintenance &amp; support for 1st year)</i>	<b>\$30</b> <i>per user</i>

# Backup for File Servers, Endpoints & Applications

	<b>File Servers</b> <i>Windows &amp; Linux Servers</i>	<b>Endpoints</b> <i>Windows &amp; Mac OS</i>	<b>Applications</b> <i>(MS Exchange, SQL, SharePoint, Outlook &amp; MySQL)</i>
<b>Subscription License</b> <i>(Includes product updates, upgrades &amp; standard technical support until subscription period)</i>	<b>\$60</b> <i>per server/annum</i>	<b>\$15</b> <i>per endpoint/annum</i>	<b>\$60</b> <i>per application/annum</i>
<b>Perpetual License</b> <i>(Free maintenance &amp; support for 1st year)</i>	<b>\$150</b> <i>per server</i>	<b>\$37.50</b> <i>per endpoint</i>	<b>\$150</b> <i>per application</i>

# Thank You

---

USA & CANADA  
+1-512-256-8699

UNITED KINGDOM  
+44-203-793-8668

## Email

[vembu-sales@vembu.com](mailto:vembu-sales@vembu.com)  
[vembu-support@vembu.com](mailto:vembu-support@vembu.com)